

# MIGRATING WITH Ringo & Mona

Ring-neck Duck Monarch Butterfly

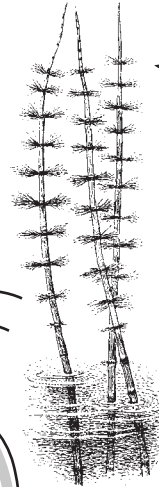
Ring-neck ducks have a faint brown ring around their black necks.



There are 6,742 monarch butterflies in the butterfly migration display.



Horsetail is poisonous to cattle but not to humans.



Ringo's House at the pond.

Stay far from the airplane.



The golden eagle chick in the eagle diorama is made of rubber, feathers, and rabbit fur.

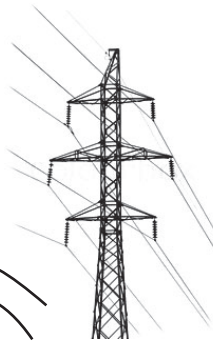


No one lives in this polluted lake.

The wind blows you off course.



Power lines can hurt you.

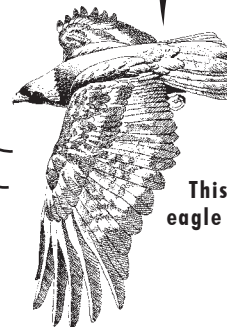


Monarch butterflies only lay eggs on milkweed and monarch caterpillars only eat milkweed.



Mona's House in the milkweed garden.

This golden eagle is hungry.



Fly around the building.



# Grades K-3 | Life Sciences Gallery

1. What animal is hiding under the black spruce tree

behind the moose? Snowshoe hare. (This is the first diorama you see when you enter the gallery.)

2. At the *Bogs, Fens, and Muskegs* display, get down on your hands and knees. How many beetles do you see?

One, the predaceous diving beetle. (This is a small display across from the Moose diorama.)

3. How many black wolves are in this display? 2 (The second black wolf is in the background painting.)

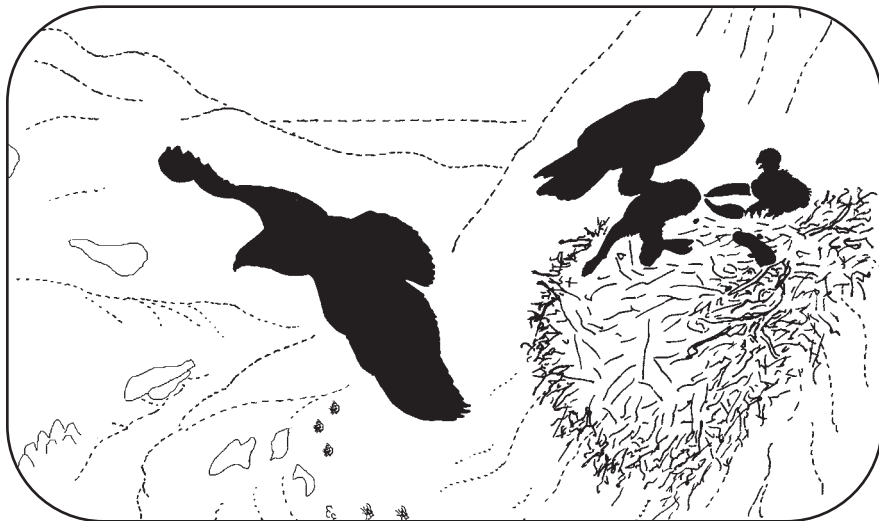
4. What frightening sound do you hear when the lights go

out in the *Mixed Woods*? A cougar roar. (You may have to wait a few minutes for the lights to go out to hear the Cougar.)

5. Standing in front of the *Aspen Parkland* display, jump up and down. What animal in the display are you pretending

to be? White-tailed jack rabbit. (This display is a winter diorama containing White-tailed deer. The Jack Rabbit is near the front.)

6. Draw what is missing in this display.



7. In the *Mixed Grassland* display, what animal dug the

burrow in the ground? American badger. (This display contains the Pronghorn; the burrow is on the right.)

8. What season is it in the *Cypress Hills* display? \_\_\_\_\_

Fall. (Have the kids look at the colour of the leaves in the background painting.)

9. What colours do you see on the toucan in the *Rainforest*

display? Yellow, red, black, and white. (The toucan is on a lower branch near the front.)

10. Draw three kinds of tracks you see in the *Time Tunnel*.

Bicycle tracks, human footprints, animal tracks, tire tracks.

11. The photograph of the Earth is taken from what object

in space? The moon. (This is the picture that can be seen at the end of the "Time Tunnel.")

